



D12S



- Flexible pixel pitch ranging from 100 up to 1,200mm
- Various lens cover : flat and dome type, clear and diffuser type
- Various installation methods on irregular architectural surface



Macau Cotai Central "Kids Cavern"
Jan. 2013. Macau

PRODUCT SPECIFICATIONS_RGB

LED Source	3 in 1 Full Color SMD LED x 12	
Size (W×D×H)	68mm x 59.5mm x 12.6mm	
Material	Polycarbonate	
Weight	56.5g (0.12lbs)	with cable 200mm
Power Consumption	Max. 2W	1 Node
Brightness	60lm, 23cd	1Node, Clear Flat Cover
Pixel Pitch	100mm ~ 1,200mm	
Beam Angle	110°	Flat Cover
Color Process	3 x 12 bit (Gamma Correction)	
Control	Artnet, DMX, Video Control	
Operating Voltage	24V DC	
Addressing	Auto/Manual Addressing Setting	
Protection	IP66	
Operating Temperature	-30°C ~ 60°C (-22°F ~ 140°F)	
Storage Temperature	-40°C ~ 80°C (-40°F ~ 176°F)	
Option	Flat Cover (Clear / Diffuser)	
Certification	CE, EN62471	

SYSTEM SPECIFICATIONS

Main Input Cable	20m (AWG18 x 4C), 20~50m (AWG22 x 6C)	
Maximum Connection	Max. 60 Nodes	100 ~ 200mm pixel pitch

PRODUCT SPECIFICATIONS RGBWHITE		2W		3W	
LED Source	3 in 1 Full Color SMD LED x 6, White LED x 6				
Size (W×D×H)	68mm x 59.5mm x 12.6mm				
Material	Polycarbonate				
Weight	56.5g (0.12lbs)	56.5g (0.12lbs)		with cable 200mm	
Power Consumption	Max. 2W (RGB 1.3W, White 0.7W)		Max. 3W (RGB 2W, White 1W)		
Brightness	97lm, 36 cd	97lm, 36 cd		136lm, 51 cd	
Pixel Pitch	100mm ~ 1,200mm				
Beam Angle	110°				
Color Process	3 x 12 bit (Gamma Correction)				
Control	Artnet, DMX, Video Control				
Operating Voltage	24V DC				
Addressing	Auto/Manual Addressing Setting				
Protection	IP66				
Operating Temperature	-30°C ~ 60°C (-22°F ~ 140°F)				
Storage Temperature	-30°C ~ 80°C (-22°F ~ 176°F)				
Option	Flat Cover (Clear / Diffuser)				
Certification	CE, EN62471				

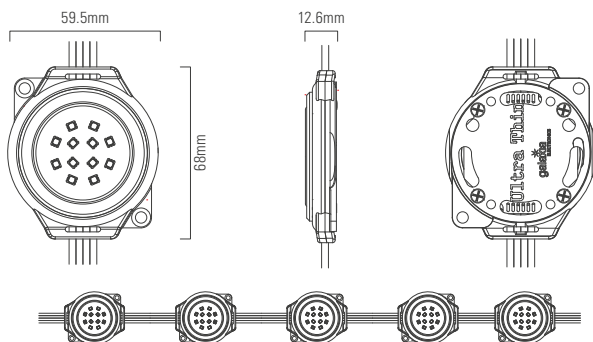
SYSTEM SPECIFICATIONS		2W		3W	
Main Input Cable	20m (AWG18 x 4C), 20~50m (AWG22 x 6C)				
Maximum Connection	Max. 60 Nodes	Max. 40 Nodes		100 ~ 200mm pixel pitch	

PRODUCT SPECIFICATIONS **WHITE**

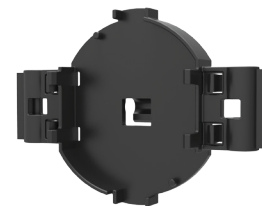
LED Source	White LED x 12				
Size (W×D×H)	68mm x 59.5mm x 12.6mm				
Material	Polycarbonate				
Weight	56.5g (0.12lbs)	with cable 200mm			
Power Consumption	Max. 2W				
Brightness	176 lm, 65 cd	4500K+ 6000K, 1Node, Clear Flat Cover			
Pixel Pitch	100mm ~ 1,200mm				
Beam Angle	110°				
Color Process	3 x 12 bit (Gamma Correction)				
Control	Artnet, DMX, Video Control				
Operating Voltage	24V DC				
Addressing	Auto/Manual Addressing Setting				
Protection	IP66				
Operating Temperature	-20°C ~ 50°C (-4°F ~ 122°F)				
Storage Temperature	-30°C ~ 80°C (-22°F ~ 176°F)				
Option	Flat Cover (Clear / Diffuser)				
Certification	CE, EN62471				

SYSTEM SPECIFICATIONS					
Main Input Cable	20m (AWG18 x 4C), 20~50m (AWG22 x 6C)				
Maximum Connection	Max. 60 Nodes			100 ~ 200mm pixel pitch	

TECHNICAL DRAWING



ACCESSORY



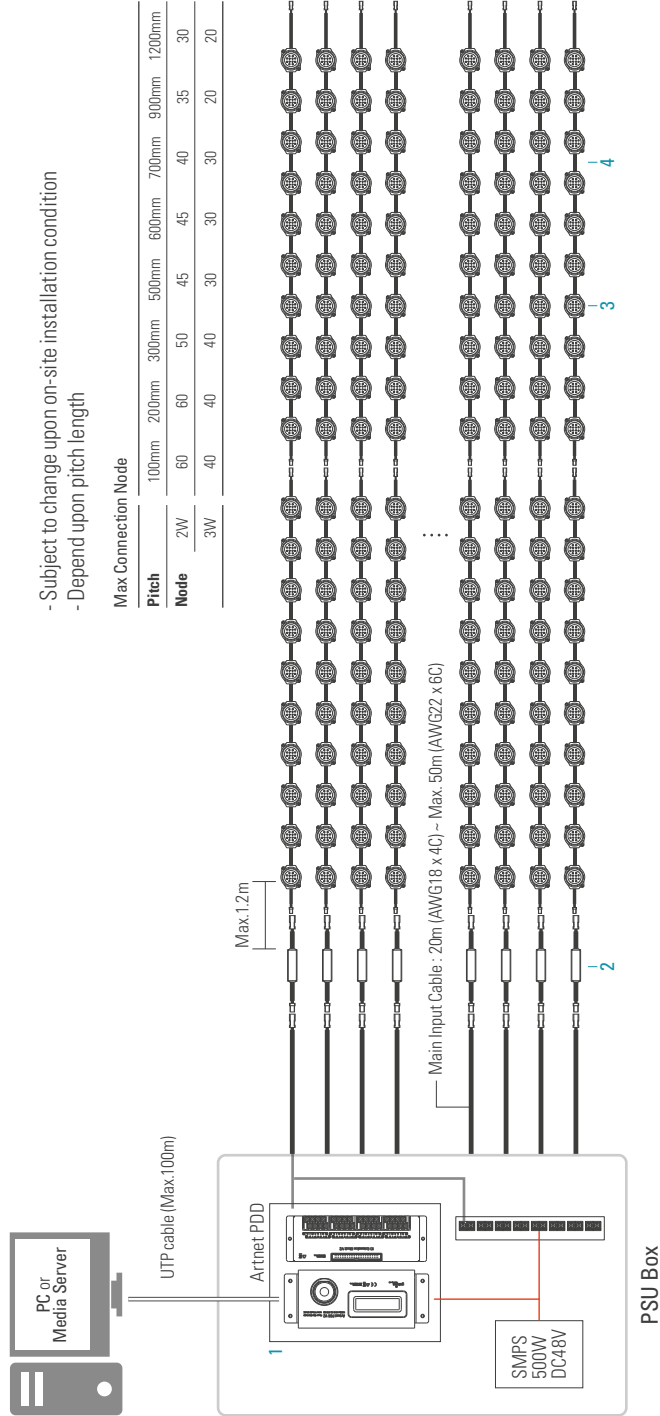
Wire Bracket

※ Accessories appeared on product image are optional and are not included on basic model.

SYSTEM BLOCK DIAGRAM

- Subject to change upon on-site installation condition
 - Depend upon pitch length

Max Connection Node									
Pitch	100mm	200mm	300mm	500mm	600mm	700mm	900mm	1200mm	
Node	2W	60	60	50	45	45	40	35	30
	3W	40	40	40	30	30	30	20	20



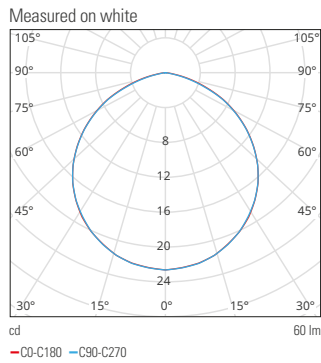
- 1 Artnet PDD**
 - Size : (W)160 x (D)80 x (H)17.2mm
 - Input Data : Artnet
 - Input Voltage : 24V DC (10 ~ 60V DC)
 - Output Data : 16port Differential Data
 - Operating Temp : -20 ~ 50°C
 - Max Connector : Max 100nodes per port
 - Function : Data transfer
- 2 LPU24**
 - Size : (W)30 x (H)21 x (D)158mm
 - Input Data : SPI Differential Data
 - Input Voltage : 48V DC (28 ~ 60V DC)
 - Output Data : SPI Single Data
 - Output Power : 24V DC
 - Operating Temp : -20 ~ 50°C
 - Max Connector : Max 6nodes per port
 - Protection : IP 66
 - Function : Power & Data converting
- 3 D12S**
 - Size : (W)69.5 x (H)68 x (D)12.6mm
 - LED : 3 in 1 Full Color SMD LED
 - Power Consumption : Max.2W
 - Brightness : 22.8cd/node
 - Input Data : SPI Single Data
 - Operating Voltage : 24V DC
 - Operating Temp : -30 ~ 60°C
 - Protection : IP 66
 - Node Pitch : 100 ~ 1,200mm
- 4 D12S cable**
 - Size : AWG18 x 4C
 - Length : Max.1200mm
 - Connector : Waterproof CON

PHOTOMETRICS

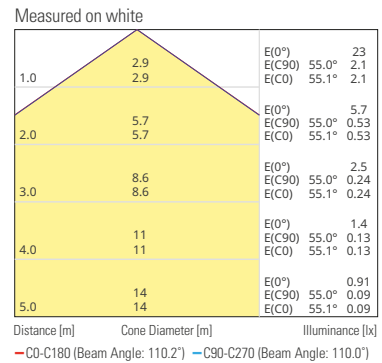
GD-12CFO
(D12S_RGB_Clear Flat_110D_2W)

Color	White	Red	Green	Blue
Lumens	60	16.6	41.2	6.7

Polar LDC

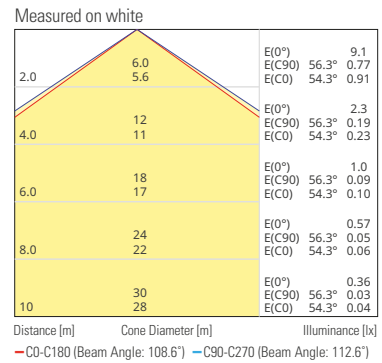
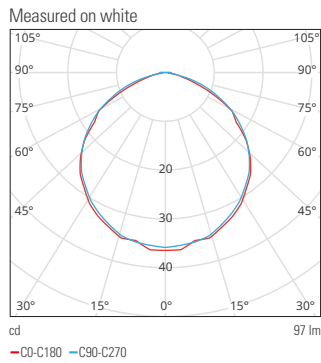


Illuminance at distance



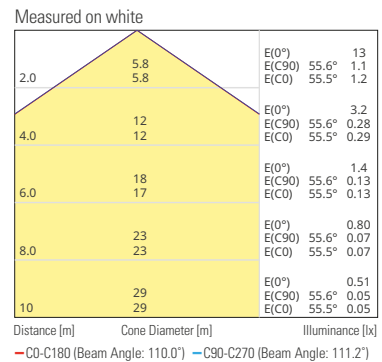
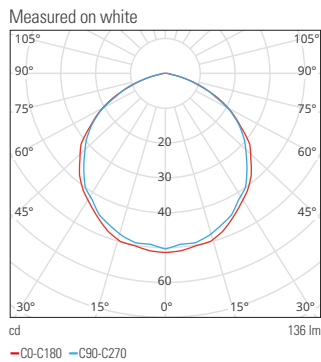
GD-12CGO-17-01
(D12S_RGB+4000K_Clear Flat_110D_2W)

Color	2CH, 6500K, Full on	1CH, 4000K, RGB off
Lumens	97	55



GD-12CGO-17-04
(D12S_RGB+4000K_Clear Flat_110D_3W)

Color	2CH, 6500K, Full on	1CH, 4000K, RGB off
Lumens	136	83



GD-12CWO-17-01
(D12S_White 4500K+6000K_Clear Flat_110D_2W)

Color	2CH, 5000K, Full on
Lumens	179

