

GALAXIA ELECTRONICS

Global Leader in LED Display & Lighting



Your Vision

Win Your Vision

C O N T E N T S

- 05 CEO Message
- 06 Company History
- 08 Hyosung
- 10 Galaxia Electronics
- 12 LED Display
- 22 Decorative Illumination
- 32 General & Special Lighting
- 42 Global Sales Office

GALAXIA ELECTRONICS

Creator of Light and Warmth

Please remember how everyone here at Galaxia Electronics appreciates your continuing interest and support over the years.

As one of the subsidiaries under the IT division of Hyosung Group, Galaxia Electronics primarily focuses on R&D, along with the manufacturing of LED displays, architectural lighting, and general LED lighting. We've become a global leader within the industry through our commitment to the highest level of professionalism. Our products have attained a superior quality due to our innovative technology. We developed lightweight frame structures through the use of carbon fiber, as well as high definition 3D displays, with creative design. Furthermore, progress continues to be achieved by employing our systematic management style in design, manufacturing, architectural engineering, after-sales service and business model development. We will forever strive to find the optimum solution to fulfill the requirements of all our customers.

Dear valued customers,

Everyone here at Galaxia Electronics will continue to do his or her utmost to support your success, based on our strong investment in R&D, a pro-market strategy and a commitment to a customer oriented corporate culture that relies heavily on innovation, creativeness and enthusiasm.

We thank you.

COMPANY HISTORY

2006

Foundation of
Galaxia Electronics



2009

- 10** The Largest LED Media Facade(7,722m²) for **Seoul Square Building** near Seoul Station in Korea
- 10** Launched **Studio Lighting**(KLA)
- 04** Multi Media Fantasy Show **"Dream of Laciun"** at Samsung Everland Resort in Korea

Launched Studio Lighting



Starting Cooperation with VER (No.1 Rental Biz in USA)



2010

- 09** Developed **3D RF Active Liquid Crystal Shutter Glasses Method**
- 06** Developed **3D Passive Polarized Glasses Method**
- 05** 1000-inch LED screen and water stage for **Yevit, Media art gallery** at Han River in Korea
- 04** Contracted long term & Exclusive supply agreement to AV Company in USA



Korea-first Development of 3D LED Display solution (Archive type)



LED Full HD



2011

- 11** Relocation of manufacturing center to Suwon, Korea
- 07** LED Media Facade for **SAMSUNG D'Light** (Experience Zone of Samsung Electronics) in Korea
- 05** Media facade with LED LGP(Light Guide Plate) for **Some Sevit** at Han River in Korea

2012

- 12** Awarded the bid of Architectural Lighting project for **SOCAR** (State Oil Company of Azerbaijan Republic)
- 05** 153-inch HD LED TV system for the French Open, **Roland-Garros 2012** in France
- 03** **Osaka Round One** in Osaka Namba, Outdoor advertising Media screen



SOCAR (State Oil Company of the Azerbaijan Republic) Architectural Lighting Project (\$8 Mil)





FRANCE
GALOP



2013

- 11 Outdoor LED media systems for **France Galop** (Major racecourses in Paris)
- 11 LED Lighting embedded in the Motorized Louver for **YTN Newsquare** at DMC (Digital Media City) in Seoul, Korea
- 08 Architectural Lighting for **Renaissance Doha City Center Hotel** in Qatar
- 02 Media Facade System with Recessed Lighting Type for **NC Soft R&D Center** in Korea
- 01 LED Media Facade for **Ooredoo Kuwait**
- 01 Architectural Lighting for **Kai-Tak Cruise Terminal** in Hong Kong

2014

- 12 Architectural Lighting for **Louis Vuitton** at Lotte Avenuel in Korea
- 06 Media Facade advertising for **Publicis Drugstore** in Paris, France
- 04 LED LGP(Light Guide Plate) for **Burberry** at Kerry Centre in Shanghai, China
- 01 **Ooredoo Kuwait** Bar type Media Facade

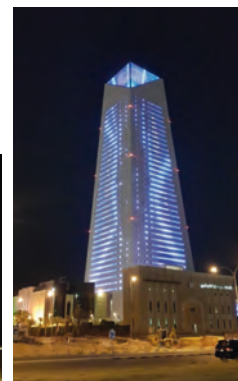
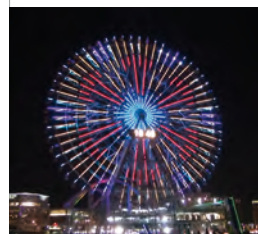


GL2
Launch



2016

- 11 A Multiplex Shopping Mall **Irae Tower** Media Facade, in Korea
- 10 Decorate Lighting For **South Beach** of wavy ceiling in Singapore
- 06 Architectural Lighting for **Cartier Maison** in Seoul
- 06 Architectural Lighting for **Louis Vuitton, Lotte Duty Free** in Jeju Island
- 04 **Riga Mall** Media Facade, A New Shopping Mall Opened in Moscow
- 03 Ferris wheel **Cosmo Clock 21** in Japan, Yokohama



*Ultra light,
High Resolution Display
Video Wall Launch
(GL Series)*



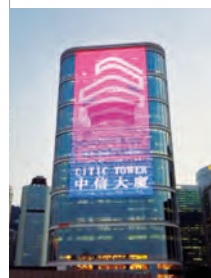
Carbon fiber



Frame structure

2015

- 11 **Golden Way** Timeless Elegance, Christmas Light Art Installation in London
- 11 LED Screen for **NDIA** (New Doha International Airport)
- 10 **Euromedia France** Broadcast Studio
- 10 LED Digital Display for **China Construction Bank** in Seoul, Korea
- 08 Facade Design for **Burberry** Flagship Store in Seoul



2017

- 01 Facade Design for **KT&G Sangsangmadang Hongdae** in Seoul
- 01 Facade Design for **CBK** (Central Bank New H.Q of Kuwait)

WINVISIONNeo
Launch





**A company realizing continuous growth -
Hyosung is committed to winning the global competition.**

Hyosung exports over 70% of its products overseas and boasts a global manufacturing system consisting of 35 production entities in 12 countries worldwide. Hyosung will continue to strengthen its global management abilities in marketing, production technology, and service across all business areas and stay ahead in the fierce global competition.



Power & Industrial System



Textile



Construction



Trading



Industrial Materials



Chemicals



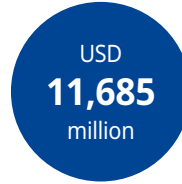
Information & Communication



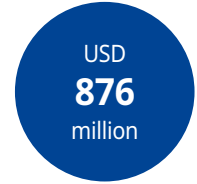
Financing & Other Affiliated Companies



Total Sales



Total Assets



Operating Profit

With Customers, With the World - Hyosung is your trusted partner.

Hyosung is growing as a global leader with its excellent technologies and services in business sectors such as textile, industrial materials, chemicals, power & industrial systems, construction, trading, and information & communication. Guided by our management philosophy of "Global Excellence," we endeavor to provide higher values for our customers all over the world. We shall continue challenging ourselves and innovating while securing and maintaining customer loyalty and trust.

Polyketone Carbon Fiber
Original New Material



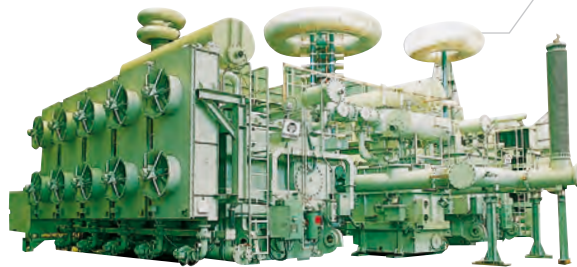
Spandex
World Best



Tire cord
Global No. 1



Convergence Energy System
Global Leader





Delighting people with light

Galaxia Electronics is a subsidiary of Hyosung Group. We are specialized in the LED application field and provide efficient technological solutions through user-centered research. We continue to expand on our area of business expertise.



GLOBAL NETWORK

Global Network with Widespread Sales & Service Channels

DESIGN CREATIVITY

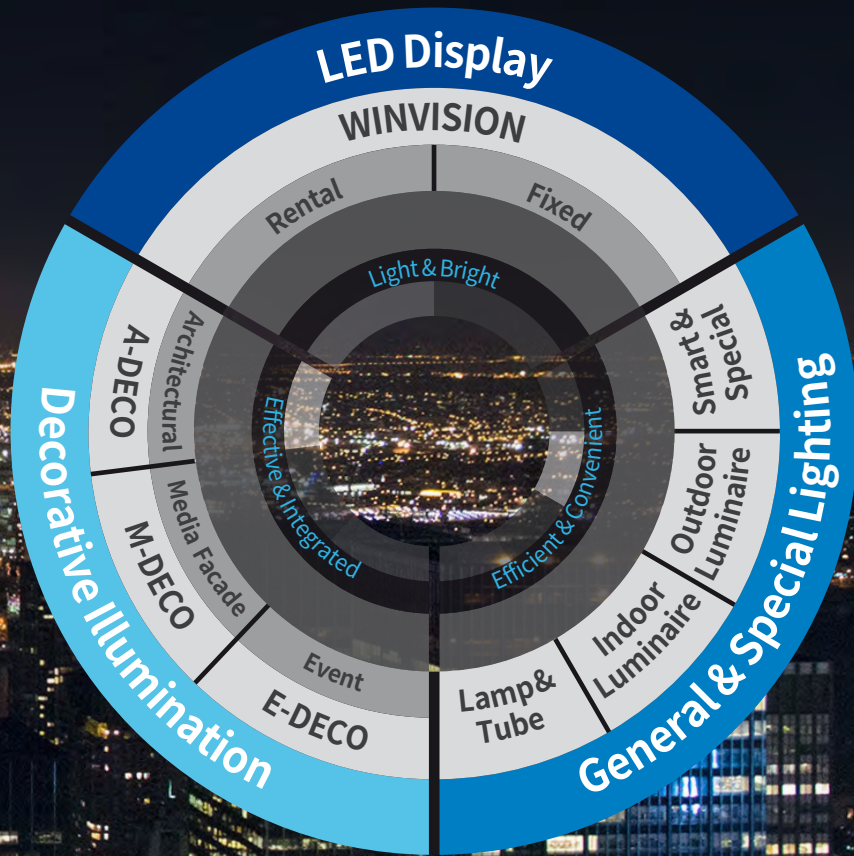
Professional Design Proposal Providing Customized Solution

ENGINEERING CAPABILITY

Professional Engineering Capability with R&D Center

MAINTAINABILITY

Timely and Proper Maintenance through an After-sales Service from Global Network and Partners



LED DISPLAY

WINVISION™

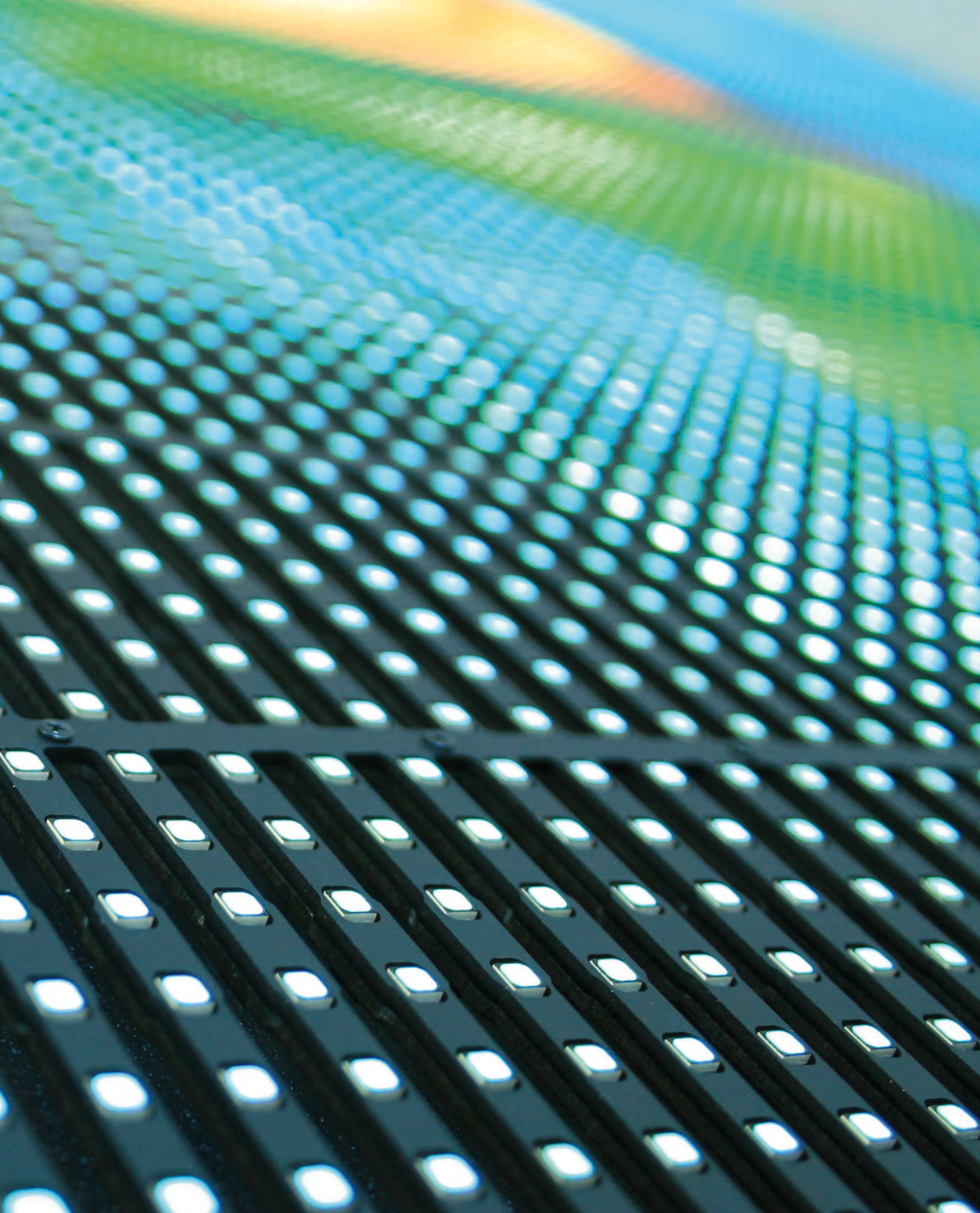
Rental



Fixed



Winvision, a well-established brand of Galaxia Electronics' premium LED displays with vivid multicolor processing capabilities, consists of a rental product line used for indoor/outdoor staging and a fixed structure product line used for outdoor LED displays. Our state-of-the-art LED display systems are designed to be slim and light weight, durable and reliable with its own user-friendly system software. We provide high value added products through the development of new functions to meet the ever changing demands of our customers with full HD, 3D, high contrast and easy installation.





Nautilus HYOSUNG

A projector in a boardroom of an enterprise was replaced with Winvision NEO LED screen to provide with clearer image display. The brightness setting can be adjusted depending on the ambient light in the room.

System Volume	3,330mm(W) x 2,080mm(H)
Application Product	Winvision NEO(2.5mm), Indoor / Total 30(6x5) LDMS
On-site Installation	Jul. 2016, Korea



NDIA New Doha International Airport

NDIA is a new Doha International Airport (also called as Hamad International Airport) located east of Doha, the capital of Qatar. It is the second largest airport after French Charles De Gaulle amongst the international airports. The large LED screen that is designed in line with the scale of the building will host travelers with various displays and information.

System Volume	25,200mm(W) x 5,040mm(H)
Application Product	Winvision X4(4.375mm), Outdoor / Total 1,620(90x18) LDMS
On-site Installation	Nov. 2015, Qatar



The French Open Roland-Garros 2012

153-inch HD LED TV system was installed in 2 locations at Roland-Garros for the French Open, one of the most anticipated Grand Slams in the world of tennis. Our LED screens provided the spectators with vivid images of the competition, ceremonies and promotions.

System Volume	3.36m(W) x 1.96m(H), 153inch x 2
Application Product	Winvision X5(5.83mm), Outdoor / Total 84 LDMs
On-site Installation	May~June 2012, France

WIN Your VISION



France Galop

France Galop is an organization responsible for operating major horse racing events in and around the district of Paris. The France Galop team was in need of LED displays, suitable to the unique environmental conditions of the race track. They wanted to provide their spectators with dynamic race scenes of various events. Galaxia Electronics provided customized LED media systems suitable for each site, meeting the demands of every installation.

System Volume	Saint Cloud: 3.36m(W) x 1.96m(H) / Chantilly: 4.48m(W) x 2.52m(H) / Auteuil: 4.48m(W) x 2.52m(H)
Application Product	Winvision X5 (5.83mm), Winvision X8 (8.75mm) / Outdoor
On-site Installation	November 2013, France



YEVIT, Han River

Yevit is one of the floating islands on the Han river in Seoul. It is an impressive venue for cultural art performances and premier events. It has the ultra large 1000-inch LED display system along with various directing programs, including lighting, sound, music fountains, lasers and special effect devices. The LED display can be divided into 4 frames and used as a multi-phase display, as well as mobile on stage prop which helps to create various visual effects.

System Volume	23m(W) x 12m(H)
Application Product	Winvision 17, Outdoor / Total 2,050 Tiles (8,200 LDMs)
On-site Installation	May 2010, Korea



Ooredoo Kuwait

Ooredoo Kuwait which has unrivaled position in telecommunication market is the Kuwait's first private telecommunication service provider. Wataniya Telecom decorated the wall of entrance lobby in the head quarter with wave patterns which represent the meaning of the country name (a fortress built near water). It adds value to the interior design as the wave pattern has a function of media wall that displays various images and information to the visitors.

System Volume	6.72m(W) x 2.24m(H) x 2
Application Product	Winvision X12(12.73mm), Indoor / Total 248 LDMS
On-site Installation	Jan. 2013, Kuwait



Nanba, Osaka

System Volume 3.84m(W) x 3.84m(H)
 Application Product Winvision CX10: 144tile
 On-site Installation Nov. 2015

Hirano, Osaka

System Volume 29.44m(W) x 3.84m(H)
 Application Product Winvision CX16: 1,104tile
 On-site Installation Jul. 2016

Kawachinagano, Osaka

System Volume 3.2m(W) x 2.56m(H)
 Application Product Winvision CX10: 80tile
 On-site Installation Dec. 2015

WIN Your VISION



**Beyoncé Concert
"I am Tour....."**

21

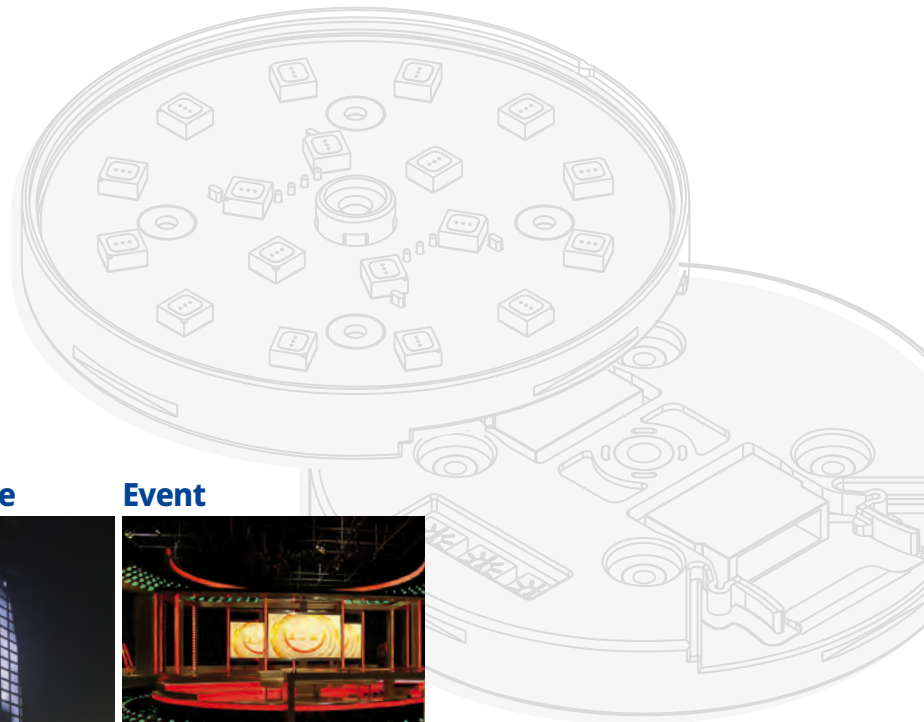


**Michael Jackson
"This is It", 3D Display**

**Super Bowl 2009
Half-Time Show**

DECORATIVE ILLUMINATION

A-DECO | M-DECO | E-DECO



Architectural



Media Facade



Event



Galaxia Electronics is able to transform a building into a notable landmark. Our leading-edge technology accentuates the building facade with LED illuminant. Furthermore, we keep a minimal degree visibility of the lighting equipment during the daytime through innovative installation methods. Based on integrated facade design using dot, line, and face shape LED devices, we provide a dazzling assortment of video sequences, brilliant images and vibrant text to capture the attention of any spectators.





Cosmo Clock 21

Cosmo Clock 21 located in Yokohama Cosmo World is one of representative attractions in Yokohama, Japan. In this city which is famous for beautiful night view, a renewal project of this Ferris wheel was conducted to make more attractive and beautiful scenes of Yokohama. We provided video display products and control system, and raised the quality of display by our own customized video contents created based on the client's request.

System Volume	Ø100m x 2side
Application Product	A-debar 1500mm (1,920ea), 1000mm (360ea), 500mm (60ea) / Outdoor P60_360ea / Outdoor Winvision CX10_(38ea x 10ea) x 2side / Outdoor
On-site Installation	Mar. 2016, Japan



MIO Corporation, Tennoji Station

Tennoji Station is the third largest station in Osaka. The station is surrounded by many large industrial facilities, shopping malls and educational facilities. For MIO Corporation, we installed large scale Media Façade of 35(W)x15(H)meter, being the first large format Media Façade in Japan, and the system is built to automatically control the brightness at day and night time using Time Scheduler. In addition, the building has become a landmark by the convergence of media façade and architectural lighting.

System Volume	35m (W) x 12m (H)
Application Product	Linear type-Unit [1,380mm (W), 8bars per Unit], Indoor & Outdoor / Total 345units (Bar: 2,760ea)
On-site Installation	Jan. 2013, Japan



© Création & Production ECA2
 Création graphique : Julien LIMOUSE
 Photo : Julien PANIE

Publicis Drugstore

The Publicis Drugstore located on Champs-Élysées avenue in Paris is the first building that adopts a media facade on this historical avenue. LED fixtures were attached on the contours of glass structure of the building's exterior by using durable adhesives. We created a lively image display through our ability to manipulate an image on an individual pixel level. The reliability and stability of the operation is dependent on our Automatic Detection Backup System.

System Volume	114m(W) x 19m(H)
Application Product	D6, Outdoor / Total 17,115 Nodes
On-site Installation	June 2014, France



Riga Mall, Moscow

Riga Mall is a new shopping mall opened in May 2016 in Moscow, Russia. The superb A-Debar is installed facing one another & light up toward the white aluminum panel which is used as the façade's finishing material. As indirect lighting, it provide not only various color effect but also media information such as video, pattern and text when the white facade surface is used as a giant canvas. It is also integrated with a large LED screen installed on the center of facade and provides unfitted display effect with the LED screen.

System Volume	150m(W) x 14m(H)
Application Product	A-debar 1200mm(1,738ea), 300mm(158ea) / Outdoor
On-site Installation	Apr. 2016, Russia



Louis Vuitton Lotte Avenuel

Louis Vuitton Lotte Avenuel located in Seoul remodeled the facade to highlight the brand of Louis Vuitton. We showcased luxury brand images by displaying Louis Vuitton's pattern in a glowing white metallic pattern. (color temperature 4000K-Wall Wash).

System Volume	19m(W) x 5.5m(H)
Application Product	E-Bar 16W (300mm, 4000K) 16ea, E-Bar 54W (1000mm, 4000K) 196ea, E-Bar 65W (1200mm, 4000K) 30ea / Outdoor
On-site Installation	December 2014, Korea



Burberry, Kerry Centre, Shanghai

It was designed as a harmonization of Burberry's unique plaid-patterned light guide panels and white LED lighting. Also designed to enable dot control and dimming. Elaborate patterns and the harmonization of lighting create a distinctive mood.

System Volume	72.8m(W) x 15.6m(H)
Application Product	Customize Product, Indoor / Total 508ea
On-site Installation	April 2014, China



Seoul Square Tower

Taking the advantage of its geographic location with its sizeable pedestrian traffic, Seoul Square Tower is able to bring various kinds of media art to the public with a "Culture for All" concept. Our installation method that integrates LED lighting equipment into the exterior materials on the building's facade enables a seamless display of media art.

System Volume	99m (W) x 78 m (H) / 7,222 m ²
Application Product	D3 Standard & Recessed type, Outdoor / Total 40,000 Nodes
On-site Installation	October 2009, Korea



SAMSUNG D'Light

Experience Zone of
Samsung Electronics

Samsung D'Light, where you can experience Samsung Electronics' high-tech products, intended to deliver various messages to highlight the image of a pioneer in state-of-the-art technology. We built an image system that can display diverse and dynamic images through the LED media facade onto the building's glass front. It also plays its role as an urban media art gallery which combines city's culture and the digital world.

System Volume	36m(W) x 13.7m(H)
Application Product	Smart Bar, Indoor / Total 1,500ea
On-site Installation	July 2011, Korea

GENERAL & SPECIAL LIGHTING

Lamp & Tube Lighting



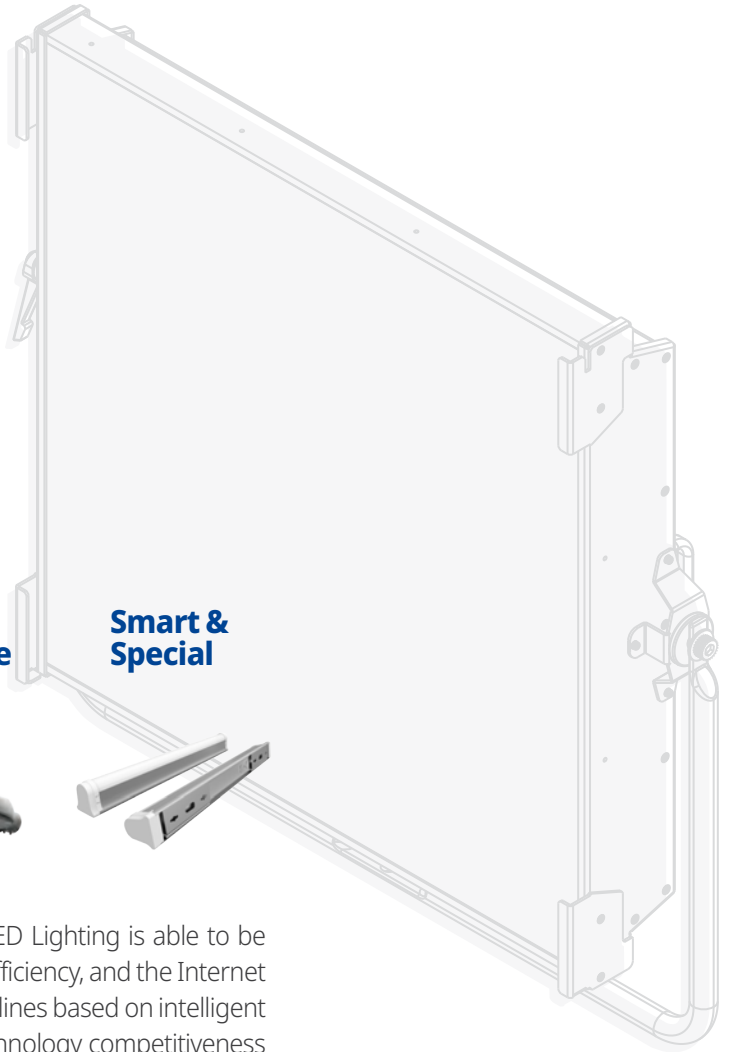
Indoor Luminaire



Outdoor Luminaire



Smart & Special



LED general lighting is the next generation in lighting. LED Lighting is able to be grafted into various fields, such as green growth, energy efficiency, and the Internet of Things (IoT). Galaxia Electronics has a variety of product lines based on intelligent lighting control. Galaxia Electronics achieved superior technology competitiveness in studios and broadcast lighting applications.







LED Interior Lighting

Application Product Ceiling
Down Light
Sensor Light
Wall(Bracket)
Pendant



Chloe Attitude Exhibition

Application Product Studio Lighting
On-site Installation September 2012, France



LIG Academy

Application Product GL 16S 3.5W/5.1W
6" Down light 16W/22W
LED indirect light _stick bar
GL30 12.5W

On-site Installation May 2011, Sacheon



Hyosung Factory

Application Product GFL 22W_269 pcs
GR1250RM 52W_157 pcs
GHBO 60W_34 pcs

On-site Installation February-April 2011, Gumi



Factory

Application Product GHC 150W
On-site Installation May 2016



Hyosung B-Tower

Application Product	GL30 12.5W_504 pcs GR595ST 52W_1904 pcs 6" Down Light_2099 pcs GL16S 5.1W_2222 pcs
On-site Installation	December 2011, Seoul



LIG NEX1

Application Product 4" Down Light_273 pcs
6" Down Light_1224 pcs
GL16S 5.1W_1069 pcs
GR 1195RT 52W_118 pcs

On-site Installation June~October 2011, Seoul

GLOBAL SALES OFFICE



HYOSUNG & GALAXIA ELECTRONICS

- | | | | |
|-------------|--------------|-----------|---------------------------|
| Los Angeles | Ho Chi Minh | Guangzhou | Galaxia Electronics Seoul |
| New York | New Delhi | Chongqing | Galaxia Japan Tokyo |
| Sao Paulo | Hong Kong | Tokyo | |
| Houston | Manila | Osaka | |
| Mexico | Bangkok | Riyadh | |
| Panama | Singapore | Doha | |
| Istanbul | Jakarta | Dubai | |
| Frankfurt | Kuala Lumpur | Abu Dhabi | |
| Milano | Taipei | Mumbai | |
| Moscow | Beijing | Myanmar | |
| Barcelona | Shanghai | | |

Global Sales & References

USA

Concerts & Events
LED Display (Winvision)

Los Angeles
Washington
New York
Orlando
New Orleans
Chicago
Las Vegas

FRANCE

Stade Roland Garros
France Galop
M6 TV Channel
Publicis Drugstore

RUSSIA

RIGA Mall

ANGOLA

Intercontinental Hotel

KUWAIT

Wataniya Telecom HQ

SINGAPORE

South Beach Complex

QATAR

Renaissance Hotel
Al Jazeera Studio

HONGKONG

Kai-Tak Cruise Terminal
Citic Tower
One Pecking Building

MACAU

Sands Cotai Central

AZERBAIJAN

SOCAR HQ

KOREA

Seoul Square Tower
Some Sevit
Samsung (Everland, D'light)
Posco E&C Tower
Louis Vuitton

CHINA

Burberry, Shanghai

JAPAN

Nakas
MIO Corporation
(Tennoji Station)
Burberry, Tokyo
Star Bank



50, Omokcheon-ro, 132beon-gil, Gwonseon-gu, Suwon-si, Gyeonggi-do 16642
T +82-31-8060-8936 F +82-31-8060-8999 www.galaxialed.com

Please check out  channel  to get more information.